



RED LANE ROUND UP

April 2026

Welcome back as we begin the summer term. This final term of the year is always a busy and exciting one, with lots to look forward to and plenty of opportunities for our children to shine. In particular, pupils in Year 1, Year 4 and Year 6 will be preparing for and completing their statutory end-of-year assessments over the coming weeks.

They have already shown great focus and determination, and we are confident they will continue to approach these challenges with a positive attitude.

High levels of attendance remain a key focus this term, as every lesson and every moment in school plays an important part in children's learning and progress. We look forward to working together to make the summer term a successful, rewarding and enjoyable end to the school year for everyone.

Mrs Driver



Early Birds and Night Owls

To book in for Early Birds and Night Owls please call Mrs Cornick on 01204 333580 Extension 302.

Early Birds 7.30am - 8.40am £6
Night Owls 3.30pm - 6pm £9



Attendance

Current class attendance

| | | | |
|-------|-----|--------------|-----|
| Rec C | 92% | Rec W | 92% |
| 1H | 91% | 1S | 94% |
| 2C | 94% | 2F | 92% |
| 3T | 94% | 3W | 91% |
| 4K | 94% | 4N | 94% |
| 5B | 90% | 5T | 87% |
| 6H | 96% | 6S | 94% |
| 6M | 91% | Well done 6H | |

Our current school attendance level is:
92.7%

This is below the expected level of attendance.

Together Everyone Achieves More

Attendance

Do I need to keep my child off school?



| | | | | | |
|---|---|--|--|---|--|
| Chicken Pox Until all spots have crusted over | Conjunctivitis No need to stay off but school or nursery should be informed | Diarrhoea & Vomiting 48 hours from last episode | Glandular Fever No need to stay off but school or nursery should be informed | Hand, foot & mouth No need to stay off but school or nursery should be informed | Impetigo Until lesions are crusted & healed or 48 Hours after commencing antibiotics |
| Measles or German Measles 4 days from onset of rash | Mumps 5 days from onset of swelling | Scabies Until after first treatment | Scarlet Fever 24 hours after commencing antibiotics | Slapped Cheek No need to stay off but school or nursery should be informed | Whooping Cough 48 Hours after commencing antibiotics |
| Flu Until recovered | Head Lice No need to stay off but school or nursery should be informed | Threadworms No need to stay off but school or nursery should be informed | Tonsillitis No need to stay off but school or nursery should be informed | | |

The Department for Education (DfE) states that children should attend school every day, with exceptions only for illness or other unavoidable circumstances.

At Red Lane, we monitor attendance closely and work with families to address any concerns. Consistent attendance helps children build routines, engage fully in learning, and achieve their potential.

Parents are urged to avoid taking children out of school for holidays during term time.



Attendance

School Matters!



Attend Today, Achieve Tomorrow

Guidance from Bolton Local Authority regarding Penalty Notices

Please click on the link below for guidance on the issuing of penalty notices and prosecution.

<https://www.bolton.gov.uk/downloads/file/163/penalty-notice>

“Your child’s education is really important. Regular attendance at school increases your child’s chance of getting good qualifications and a good job. Children need to attend school regularly to benefit from their education. Missing out on lessons leaves children vulnerable to falling behind. Children with poor attendance tend to achieve less in primary and secondary school.” - *Bolton Local Authority*

Term dates 26/27

Red Lane Primary School 26/27

| September 2026 | | | | | | |
|----------------|----|----|----|----|----|----|
| Mo | Tu | We | Th | Fr | Sa | Su |
| | 1 | 2 | 3 | 4 | 5 | 6 |
| 7 | 8 | 9 | 10 | 11 | 12 | 13 |
| 14 | 15 | 16 | 17 | 18 | 19 | 20 |
| 21 | 22 | 23 | 24 | 25 | 26 | 27 |
| 28 | 29 | 30 | | | | |

| October 2026 | | | | | | |
|--------------|----|----|----|----|----|----|
| Mo | Tu | We | Th | Fr | Sa | Su |
| | | | 1 | 2 | 3 | 4 |
| 5 | 6 | 7 | 8 | 9 | 10 | 11 |
| 12 | 13 | 14 | 15 | 16 | 17 | 18 |
| 19 | 20 | 21 | 22 | 23 | 24 | 25 |
| 26 | 27 | 28 | 29 | 30 | 31 | |

| November 2026 | | | | | | |
|---------------|----|----|----|----|----|----|
| Mo | Tu | We | Th | Fr | Sa | Su |
| | | | | | | 1 |
| 2 | 3 | 4 | 5 | 6 | 7 | 8 |
| 9 | 10 | 11 | 12 | 13 | 14 | 15 |
| 16 | 17 | 18 | 19 | 20 | 21 | 22 |
| 23 | 24 | 25 | 26 | 27 | 28 | 29 |
| 30 | | | | | | |

| December 2026 | | | | | | |
|---------------|----|----|----|----|----|----|
| Mo | Tu | We | Th | Fr | Sa | Su |
| | 1 | 2 | 3 | 4 | 5 | 6 |
| 7 | 8 | 9 | 10 | 11 | 12 | 13 |
| 14 | 15 | 16 | 17 | 18 | 19 | 20 |
| 21 | 22 | 23 | 24 | 25 | 26 | 27 |
| 28 | 29 | 30 | 31 | | | |

| January 2027 | | | | | | |
|--------------|----|----|----|----|----|----|
| Mo | Tu | We | Th | Fr | Sa | Su |
| | | | | 1 | 2 | 3 |
| 4 | 5 | 6 | 7 | 8 | 9 | 10 |
| 11 | 12 | 13 | 14 | 15 | 16 | 17 |
| 18 | 19 | 20 | 21 | 22 | 23 | 24 |
| 25 | 26 | 27 | 28 | 29 | 30 | 31 |

| February 2027 | | | | | | |
|---------------|----|----|----|----|----|----|
| Mo | Tu | We | Th | Fr | Sa | Su |
| 1 | 2 | 3 | 4 | 5 | 6 | 7 |
| 8 | 9 | 10 | 11 | 12 | 13 | 14 |
| 15 | 16 | 17 | 18 | 19 | 20 | 21 |
| 22 | 23 | 24 | 25 | 26 | 27 | 28 |

| March 2027 | | | | | | |
|------------|----|----|----|----|----|----|
| Mo | Tu | We | Th | Fr | Sa | Su |
| 1 | 2 | 3 | 4 | 5 | 6 | 7 |
| 8 | 9 | 10 | 11 | 12 | 13 | 14 |
| 15 | 16 | 17 | 18 | 19 | 20 | 21 |
| 22 | 23 | 24 | 25 | 26 | 27 | 28 |
| 29 | 30 | 31 | | | | |

| April 2027 | | | | | | |
|------------|----|----|----|----|----|----|
| Mo | Tu | We | Th | Fr | Sa | Su |
| | | | 1 | 2 | 3 | 4 |
| 5 | 6 | 7 | 8 | 9 | 10 | 11 |
| 12 | 13 | 14 | 15 | 16 | 17 | 18 |
| 19 | 20 | 21 | 22 | 23 | 24 | 25 |
| 26 | 27 | 28 | 29 | 30 | | |

| May 2027 | | | | | | |
|----------|----|----|----|----|----|----|
| Mo | Tu | We | Th | Fr | Sa | Su |
| | | | | | 1 | 2 |
| 3 | 4 | 5 | 6 | 7 | 8 | 9 |
| 10 | 11 | 12 | 13 | 14 | 15 | 16 |
| 17 | 18 | 19 | 20 | 21 | 22 | 23 |
| 24 | 25 | 26 | 27 | 28 | 29 | 30 |
| 31 | | | | | | |

| June 2027 | | | | | | |
|-----------|----|----|----|----|----|----|
| Mo | Tu | We | Th | Fr | Sa | Su |
| | 1 | 2 | 3 | 4 | 5 | 6 |
| 7 | 8 | 9 | 10 | 11 | 12 | 13 |
| 14 | 15 | 16 | 17 | 18 | 19 | 20 |
| 21 | 22 | 23 | 24 | 25 | 26 | 27 |
| 28 | 29 | 30 | | | | |

| July 2027 | | | | | | |
|-----------|----|----|----|----|----|----|
| Mo | Tu | We | Th | Fr | Sa | Su |
| | | | 1 | 2 | 3 | 4 |
| 5 | 6 | 7 | 8 | 9 | 10 | 11 |
| 12 | 13 | 14 | 15 | 16 | 17 | 18 |
| 19 | 20 | 21 | 22 | 23 | 24 | 25 |
| 26 | 27 | 28 | 29 | 30 | 31 | |

| August 2027 | | | | | | |
|-------------|----|----|----|----|----|----|
| Mo | Tu | We | Th | Fr | Sa | Su |
| | | | | | | 1 |
| 2 | 3 | 4 | 5 | 6 | 7 | 8 |
| 9 | 10 | 11 | 12 | 13 | 14 | 15 |
| 16 | 17 | 18 | 19 | 20 | 21 | 22 |
| 23 | 24 | 25 | 26 | 27 | 28 | 29 |
| 30 | 31 | | | | | |

Let's Celebrate!

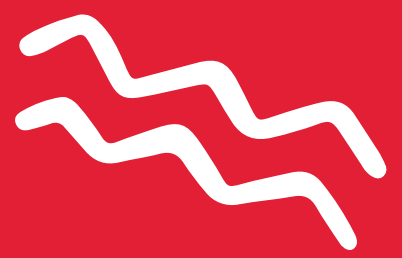
In our weekly Star Assembly the following awards are given out:

- 2 Red Lane Stars
- A Red Lane Reader Award
- Values Champion Award
- Class attendance trophy
- House team points (KS2)



KS1 Values Champions!
They demonstrated the school values this week and had a little treat as a reward!





Reminders

Lost Property

Please make sure all of your child's belongings are clearly labelled with their name and class. We always do our best to return misplaced items, and having everything labelled makes it much easier for us to reunite lost property with its owner. Thank you for your support!



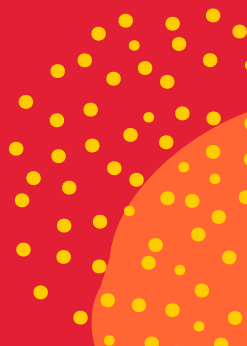
Summer sun!

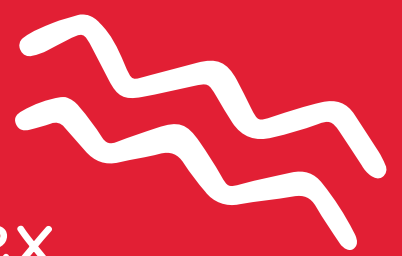
Hopefully we will start to see more of the sun and less of the clouds in the coming weeks! Please check the weather and make sure your child is dressed appropriately for school, including a coat, hat and sunscreen when needed. No sandals allowed.

Pupils are encouraged to put on their own sunscreen. Please label bottles if bringing into school.

Supervision on the school grounds

Remember children should be supervised at all times outside of school hours when on the school grounds. This includes use of any equipment such as climbing frames.





Relationships and Sex Education (RSE) , *Growing and Changing*

At Red Lane School, we teach Relationship and Sex Education (RSE) throughout the year, however the main focus of Growing and Changing is taught during our Summer term. We believe that RSE plays a vital role in supporting children's personal development and wellbeing. It is taught through age-appropriate lessons, so that RSE helps pupils understand **friendships, respect, kindness and boundaries**, while encouraging them to value themselves and others. It also gives children the language and confidence to talk about feelings and to recognise when they may need help or support. By working in partnership with families, RSE helps to prepare our children for the wider world and supports them in growing into happy, healthy and respectful young people.

More information is available on our website under Curriculum/ PSHCE. Class teachers will also send out their specific content before the topic is taught.



Teamwork in Action: Sports Round-Up



It has been a busy couple of months for sports at Red Lane and the Sports Captains have been working hard supporting Mr L Nicholson and Mr Brindle. If you are interested in representing the school teams then make sure you let Mr Brindle know during PE sessions and join the after school sports clubs.



Netball

The Netball team represented the school superbly at the local tournament. Sadly we were knocked out in the group stages, but the team showed great spirit.

Handball

The Handball team topped their group in the local tournament and finished a superb 3rd place after a tough semi-final match.

Football

Red Lane FC are near the end of their season and have shown great resilience this year to keep coming back and giving their all.

Use the link below to see the league and the remaining fixtures.

[Key PE Cup Euro](#)

Dodgeball

The dodgeball tournament was a straight forward league event. 8 teams entered and everyone plays every other team. We ended up in a respectable fourth place and the children represented the school superbly.

Karate

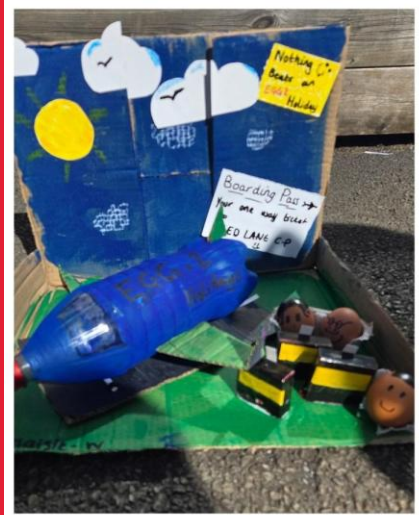
Red Tiger Karate visited earlier this month for a demonstration of what their club can offer which includes : fitness, discipline, community spirit and self defence skills. The club is open to all ages so it is great for the whole family to get involved. They run clubs all over the Northwest, but the one most local to us is at **Leverhulme School** on a Thursday evening.





Easter Craft!

Here are some of the fabulous Easter bonnets you made! Wow!





Developing Oracy with Voice 21

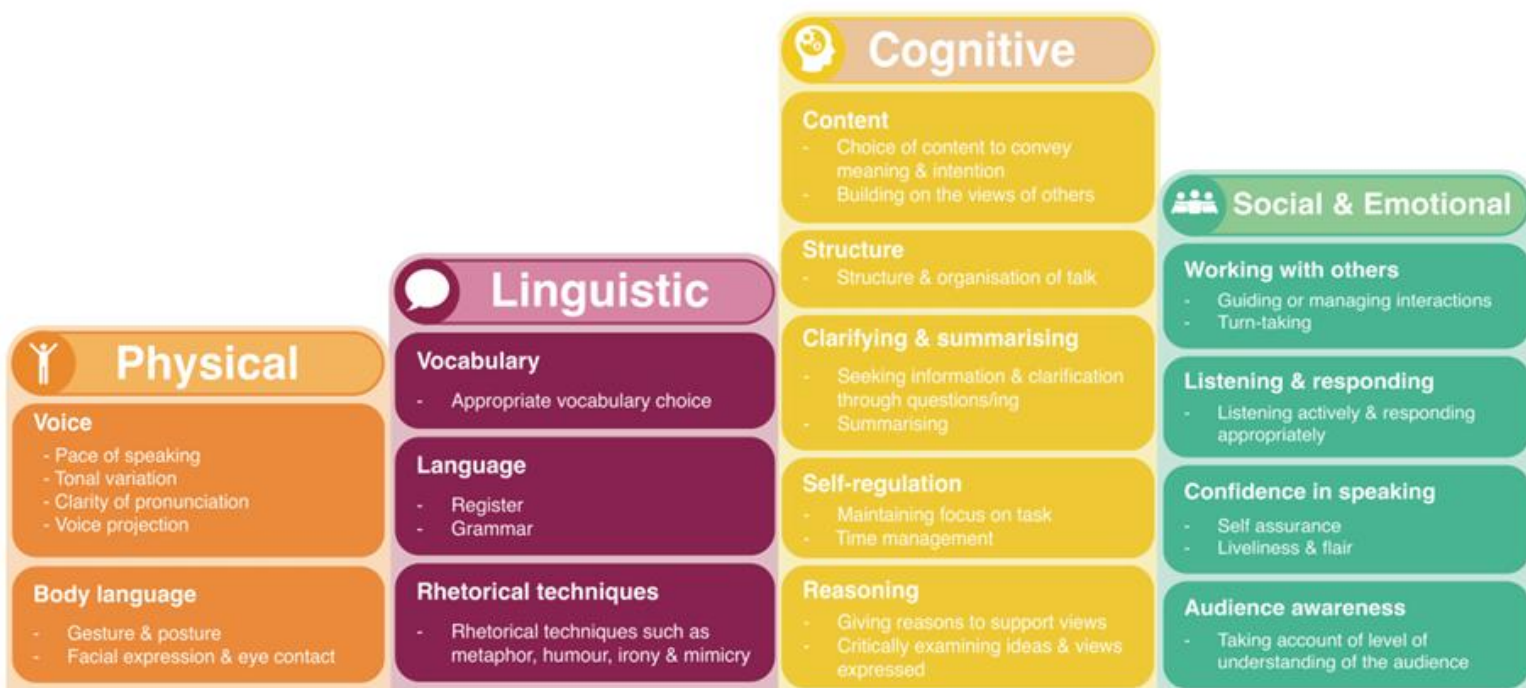


We have continued to work with Voice 21 this year to help children develop confidence in speaking and listening. In many lessons, pupils take part in short talk activities where they share ideas, explain their thinking and work together. Teachers also help children learn how to listen carefully, speak clearly and use the right words for each subject. These skills support learning in the classroom and help pupils become confident communicators.

Take a look at the framework that underpins our work.

The Oracy Skills Framework and Glossary

Oracy Cambridge
The Hughes Hall Centre for Effective Spoken Communication





Awards we are working towards...



There are a number of awards we are working towards at our school currently. Here are details of a couple of them:



We are working towards achieving the Best Practice Teaching Assistant Award.

If you have a few kind words to share about our fantastic TA team, please send a Dojo to Mrs Behan. This recognition will contribute to the award, and we would be most grateful!



We are also working towards achieving the Wellbeing Award for Schools.

Thank you for taking the time to complete the Parent Surveys at our parent conferences. If you have any further celebrations or suggestions for us around the areas of emotional wellbeing and positive mental health, please send a message to Mr Charlton!

Help us to help you

We value positive relationships with our families and always want to resolve any concerns quickly, fairly and in the best interests of your child. If you have a worry or complaint, please follow the steps below so we can support you effectively. Please be aware that staff are not always immediately available but we will respond to parents as soon as is practicably possible.

Step 1 - Speak to the class teacher

Your child's class teacher is usually the best first point of contact, as they know your child well and can often resolve matters quickly.

Step 2 - Contact the phase or unit leader

If you feel the matter needs to be taken further, please contact the leader in charge of the phase or unit. They will review the situation and work with you towards a resolution.

EYFS - Mrs Willenbrook

Y1/2 - Mr Charlton

Y3/4 - Mr Nicholson

Y5/6 - Mr Hudson

Step 3 - Contact the school office

If you remain unhappy with the outcome, the concern is about the unit leader or if the matter is extremely serious, please contact the school office. The office will ask if you have followed the escalation process and who you have spoken to previously. Where this is the first contact you will be asked for some brief details in the event that in order that your concern is responded to in a timely manner you can will be contacted by the most appropriate team member. A member of the safeguarding or senior leadership team (Assistant Headteacher, Deputy Headteacher or Headteacher) will then get in touch.

We kindly ask that parents follow this process. When concerns are raised directly with outside bodies (such as the local authority or Ofsted), they are referred back to the school. This can slow things down and make it harder for us to investigate and help—especially if concerns are shared anonymously. While we can often work out where concerns have come from, it is always better for everyone if we can speak with you directly.

We also remind parents that, in line with our Parent Code of Conduct, all concerns should be raised in a calm and respectful manner. This helps us to focus on resolving the issue and modelling positive communication for our children. We would like to thank the many parents who consistently follow our policies and work with us in a constructive way.

Please be assured that we are always happy to listen and to work with you to sort out any concern or complaint. We simply need the opportunity to do so, and following the escalation process helps us resolve issues more quickly and in your child's best interests, avoiding unnecessary delays.

Thank you for your support and cooperation.